

# 四川省鱼类寄生单殖吸虫

## .指环虫属二新种

马成伦 李远培 陈忠国

(重庆师范学院生物系)

本文记述四川省的指环虫二新种。量度毫米。模式标本保存于重庆师范学院生物系。

### 1. 伞形指环虫 *Dactylogyrus umbelliformis*, 新种(见封二图1)

小型蠕虫, 体长0.328—0.491, 体宽0.069—0.096。

边缘小钩发育完全, 第二对较大, 全长0.019—0.026, 钩尖0.006—0.007。中央大钩粗壮, 全长0.043—0.049, 柄长0.034—0.040, 外突长0.003—0.004, 内突长0.012—0.013, 钩尖长0.013。腹联结片“一”字形, 0.003—0.006 × 0.030—0.034, 背联结片伞形, 0.020—0.024 × 0.026—0.030。

交接管细管状, 基部膨大, 全长0.023—0.036。支持器片块状, 端部分支, 一支成环状, 全长0.029—0.057。阴道和卵未见。

描述依据4个封片标本。

宿主: 瓣结鱼 *Tor brevifilis* (Peters)。

寄生部位: 鳃。

采集地点: 渠江(渠县)。

此虫与 *Dactylogyrus triaxonis* Achmerov, 1952相似, 但有下列的差别: (1)中央大钩前者略大于后者1/3, (2)背联结片两者虽为“T”形, 但前者宽粗, 后者细立(3)交接器不同, 前者交接管细管状, 支持器为片块状, 后者交接管为弧形尖管, 支持器似菊花的花瓣。

### 2. 渠江指环虫 *Dactylogyrus qujiangensis*, 新种(见封二图2)

虫体一般大小, 体长0.434—0.435, 体宽0.074—0.082。

边缘小钩长0.028—0.032, 钩尖长0.006—0.007, 柄、柄轴及钩尖基突显著。中央大钩全长0.040—0.044, 柄长0.030—0.032, 外突长0.003—0.004, 内突长0.014—0.016, 钩尖长0.012—0.014。联结片“一”字形, 0.005—0.006 × 0.027—0.028。

交接管长管状, 基部膨大, 全长0.044—0.048。支持器片状, 前端有2个支状突起, 末端有两个棱脊, 一侧有喙状结构。阴道和卵未见。

宿主: 岩鲤 *Procypris rabaudi* (Tchang)。

寄生部位: 鳃。

采集地点: 渠江(渠县)。

描述依据6个封片标本。

该项研究工作承郎所教授热情指导, 谨致谢忱。

此虫与Dactylogyrus montschadskyi, Gussev, 1955 相似, 主要区别如下; (1) 联结片不同, 本虫的联结片“—”字形, 两端并不膨大, 后者棒状, 两端具有小突起; (2) 交接器不同, 本虫的交接管长管状, 基部膨大, 后者细长, 基部呈锥瓶状膨大, 本虫的支持器片块状, 末端有两个棱脊, 后者则为托盘状。

### 参 考 文 献

- 马成伦 1981 四川省鱼类寄生单殖吸虫 1. 指环虫属六新种. 动物分类学报6(1): 228—234.  
郎 所 1959 太湖鱼类寄生虫调查报告. 东太湖水生生物调查报告: 95—102. 华东师大出版社.  
Gussev, A B 1955 Monogenetic trematodes of fishes from Amur river. Tr. Zool. Insts. AN SSSR19: 171—389(in Russian).  
Gussev, A B 1962 Monogenetic trematodes. in Bychowsky, B. E.: Dianosis of parasites of freshwater fish in SSSR. AN SSSR. Mossow. (In Russian).  
Gussev A B 1976 Monogenoidea of freshwater fishes. Principles of systematics, analysis of world fauna and its evolution. Parasit. 28: 96—198.  
Yamaguti, S 1963 Systema Helminthum Vol. . Monogenea and Aspidocortylea New York, London.

## THE PARASITIC MONOGENEA OF FISHES FROM

## SICHUAN PROVINCE . TWO NEW SPECIES OF DACTYLOGYRUS DUESING, 1850

Ma Chenglun Li Yuanpei Cheng Zhongguo  
(Department of Biology, Chongqing Normal College)

TWO new species of Daetylogyrus are reported from fishes of Sichuan Province in the present paper. Measurements are in millimeters. Type specimens are deposited in the Department of Biology, Chongqing Normal College.

### 1. Dactylogyrus umbelliformis, sp. nov. (fig. 1)

Host: *Tor brevifilis* (Peters).

Location: Gill.

Locality: Qujiang River (QUXian County)

Minute worm, 0.328—0.491 in length and 0.069—0.096 in width. Opisthaptor with two connective plates. Marginal hoodlets 0.019—0.026, the 3rd longest. Central hooks: total length, 0.043—0.049, basal portion 0.034—0.040, out root 0.003—0.004, inner root 0.012—0.013 point 0.013. Ventral connective plates ‘—’ -shaped, 0.003—0.006 by 0.030—0.034, dorsal connective

plates umbrella-shaped, 0.020—0.024 by 0.026—0.030.

Copulating tube fine and long, basal expand, 0.023—0.036 in length. Supporting apparatus pieces. Vagina and eggs not discovered. Description based on 4 specimens.

This new worm resembles to *Dactylogyrus triaxonis* Achmerov, 1952, but differs from the latter and other known species of the genus by the fine and longer copulating tube and piece-shaped copulatory apparatus.

2. *Dactylogyrus gujiangensis*, sp. nov. (fig. 2)

Host: *Procypris rabaudi* (Tchang)

Location: Gill.

Locality, Qujiang River (Quxian County).

Middle worm, 0.434—0.435 in length and 0.074—0.082 in width. Opisthohapter with only one connective plates. Marginal hooklets 0.028—0.032 in length. Central large hooks: total length 0.040—0.044, basal portion 0.030—0.032, out root 0.003—0.004, inner root 0.014—0.016, point 0.012—0.014. Connective plates straight, 0.005—0.006 by 0.027—0.028.

Copulating tube long tube-shaped, and basal expand, 0.044—0.048 in length, Piece-like copulatory apparatus with two edges on the terminal end. Description based on 6 specimens.

This new worm is similar to *Dactylogyrus montschaskyi* Gussev, 1955, but differs from the latter by long tube-shaped copulatory tube and copulatory apparatus on terminal ends two edges.

(上接18页)

### 主要参考文献

- Heude, PM 1882—1885 Notes sur les mollusques terrestres de la vallee du Fleuve Bleu., Nem. d Hist. nat l Emp. Chinois, 1—87, 10 pis., 1882; 89—132. 10 pls., 1885.
- Moellendorff, OV 1882 Diagnoses specierum novarum chinae meridionalis. Jahrb., 179—188.
- , 1882 Materialien zur Fauna von China I., Jahrb., 251—278, 337—356.
- , 1883 Materialien zur Fauna von China., Jahrb., 228—269, 272—288, 356—383.
- , 1883 Diagnosen neuer, chinesischer Arten., Naehr. Bl., 65—87, 98—101. 101,
- , 1884 Diagnosen neuer chinesischer Arten., Jahrb., 109—174, Ping, Ch. & T. C. Yen, 1933 On some gastropod shells of North-west China., Bull. Fan. Inst. Biol., 4: 259—305.
- Huxabeb, N, M, 1952 Haae e Mo c ay CCCP, A Hay CCCP, Moc, 1—511.

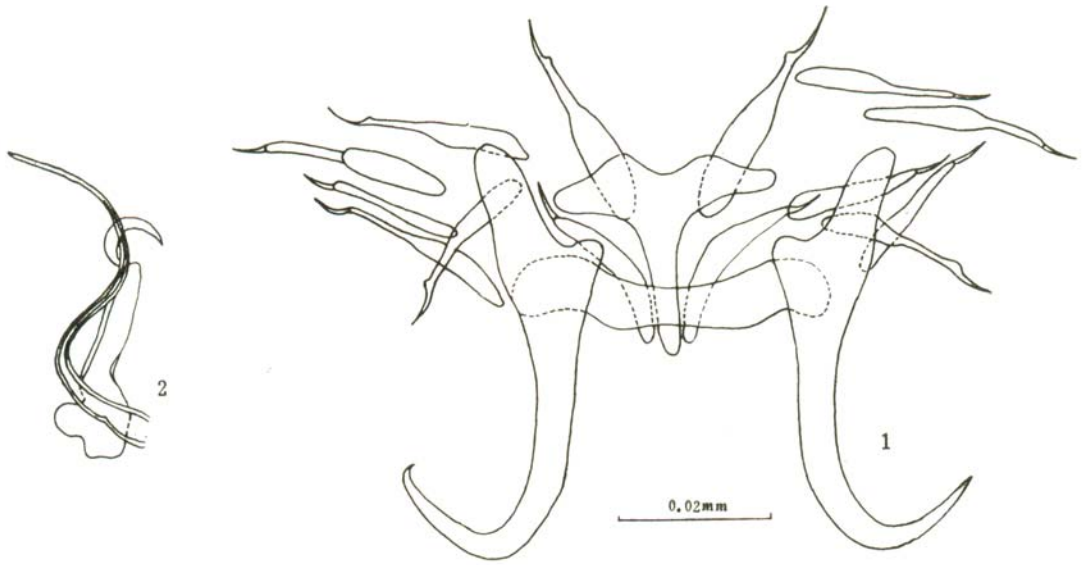


图1 伞形指环虫，新种 *Dactylogyrus umbelliformis*, sp. nov.

1. 后吸器(opisthohapter)

2. 交接器(copulatory organ)

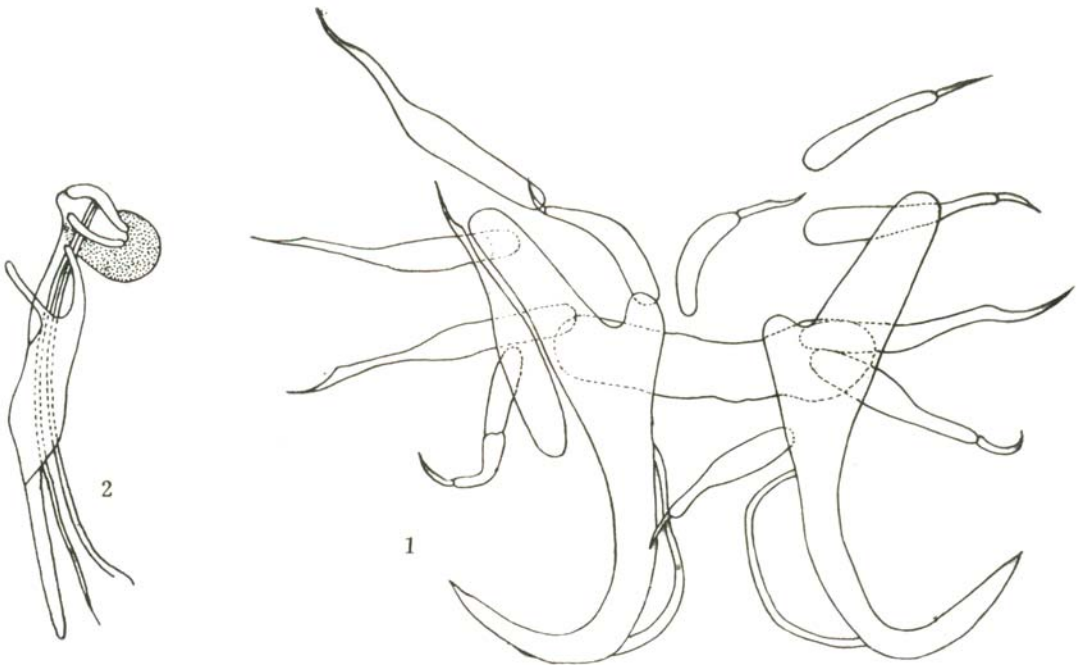


图2 渠江指环虫，新种 *Dactylogyrus qujiangensis*, sp. nov.

1. 后吸器(opisthapter) 2. 交接器(copulatory organ)